

- **Page 1** Welcome
- **Page 2** 20-21 working with schools
- **Page 3** Exhibitions at 20-21
- **Page 4** Exhibitions at 20-21

Welcome to issue 15 of our Education at 20-21 Newsletter for 2016. We hope you have all had a great Spring term and enjoyed your Easter holidays.

We have lots of innovative and engaging ways for schools to get the most out of our exhibitions over the summer.

20-21 Visual Arts Centre offers the following for future interest.

- **Self guided tours** which are free, we just ask that you let us know.
- **Guided tours** which cost £15, but you have a Learning Assistant to take you around the gallery and give you additional information on the building and exhibitions.

Both the above can be enhanced by booking the Activity Table for £1 per child where they can create a piece of work relating to the exhibitions.

We also offer core workshops and bespoke workshops. Starting from just £3 per pupil.

- **Core workshops** are workshops that have already been planned and are slightly cheaper. They are **drawing, clay, print and shadow puppet based.**
- **Bespoke workshops** are designed to your chosen topics.

The above can be delivered here at 20-21 or as outreach at your school. Except for our screen print workshops which are delivered at 20-21 Visual Arts Centre.

We also offer project work, after school clubs and teacher training.

Please contact us with any questions you may have regarding what we can offer.

Coming Soon

16 July to 10 September

Naomi Greaves

Paperology

Inspired by natural history, museum collections and Victorian book engravings, Paperology features new prints, jewellery and paper sculptures by Staffordshire based artist Naomi Greaves.



‘I’ve always been a collector of unusual things, most of which can be found in my studio. While some items hold sentimental attachments, others I’ve purchased can be quite peculiar and macabre. A large part of my collection is a library of old books full of engravings and woodcuts.’

Combining images sourced from her own book collection with antique papers carefully sourced and purchased, together with her passion for print, Paperology embraces her inspirations.

This exhibition will be of interest to Art, Natural History, History, Biology and Literacy subjects. It is also linked to Words Count.

Why not encourage students to attend Naomi’s Monoprint workshop.



Here at 20-21 Visual Arts Centre on Saturday 6 August. Just £6 per participant.

Contact details on page 4.



A new Core, Observational Drawing Workshop for 2016

This workshop focuses on specific drawing techniques where pupils explore the use of charcoal and pastels whilst being given still life display to study.

This workshop can link to a classroom themes or specific exhibitions. Suitable for all key stages.

A half or full day workshop can be booked as outreach or here at 20-21. Please contact us for details.



PRIZE DRAW

Attend to be entered in the prize draw to win a **FREE** workshop for your class

Teacher Group at 20-21



Membership costs just £120 for the first teacher and £100 for any subsequent teachers from the same school

20-21 Teachers' Group will be a space for arts educators across all sectors and Key Stages to meet, share and learn skills in the arts.

Your school will receive:

10% discount on your all school workshop bookings

10% discount on all Teacher Training

One FREE Guided Tour per school year

20-21 Visual Arts Centre will provide a programme of 3 x 3 hours artist led workshops during this membership.

For the 2016/2017 academic year, 20-21 Teachers' Group will be concentrating on Digital Arts and how this can be implemented into the curriculum.

For booking and further information please contact us.

See page 4 for contact details.

Project work at

20-21 Visual Arts Centre

20-21 Visual Arts Centre is committed to supporting education for all ages. If you have any ideas or projects you would like to develop we are more than happy to help.

We have experience in Teacher Training, After School Clubs, Whole School Art Development, Arts Award delivery, Community Artist led projects and more.

If you would like more information or just a chat about any of the above please contact us.

After School Art Clubs

Did you know that 20-21 offers after school art clubs to schools in North Lincolnshire?

20-21 has worked with a number of primary schools to provide after school sessions which not only focused on art and design using a range of materials, but also had elements of maths, science and literacy incorporated in them too.

If you are interested in 20-21 Visual Arts Centre running an after school art club at your school, please get in touch.

To Draw Is To Be Human and Becky Fawcetts', People Watching

23 April to 16 July

To Draw Is To Be Human

To Draw Is To Be Human brings together the work of five artists that use drawing as the centre of their practice; narrative, construction, gesture, mapping and inscription could be seen as the key principles that these artists are investigating through their diverse practices.

The selection includes Kate Black's illustrations from an imagined and strange soap opera, Andy Black's fantastical and repetitive landscapes, sculptures and drawings that plot journeys by Tracey Himsworth, Lucy O'Donnell's intriguing and beautiful drawings, and video work from Sally Taylor exploring her relationships with the world and others

Becky Fawcett

People Watching

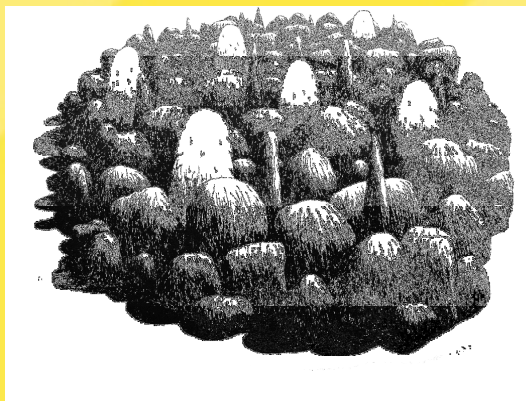
People Watching presents a series of drawings of people from towns in the Humber region, including Scunthorpe, Doncaster, Grimsby and Goole. Becky photographs and sketches people going about their everyday lives. She's concerned with ordinary people and chooses to represent people that are often ignored or overlooked. As a disabled person herself, she feels an affinity with the people she draws.

"I am capturing life on paper that is not glamorous or exciting - but their lives and stories are interesting and deserve to be told."

This exhibition will be of interest to those studying art and the skill of drawing.

Why not take advantage of this exhibition and book our new core workshop based on Observational Drawing.

Please contact us for more information.
See page 4



Liz West

Our Colour Reflection

From 14 May to 26 June 2016



Our Colour Reflection aims to transform the interior of the gallery by using over 700 mirrors. The work will reflect the gallery lighting into the roof space, projecting colour up into the historic interior. Viewers will see themselves in the mirrored surfaces as they explore the space - creating a dialogue between viewer, artwork and architecture.

Our Colour Reflection has been made possible by funding from The National Lottery through Arts Council England.

This exhibition would be of interest to those studying art and the science of colour whether it's chemistry or physics.

Why not encourage your pupils to come along to Liz West's Free drop in Rainbow Wall workshop on Saturday 28 May, 10am to 4pm here at 20-21 Visual Arts Centre.

Deep Space Moolog, 17 September to 12 November by artist Kirsty E Smith

Kirsty E Smith creates curious sculptural objects that are otherworldly, but at the same time strangely familiar. For Deep Space Moolog she will be making a new series of plinth-based works, placed in a constructed environment built to resemble a classic sci-fi set, complete with spacerocks, control panel and printed lunar backdrop.

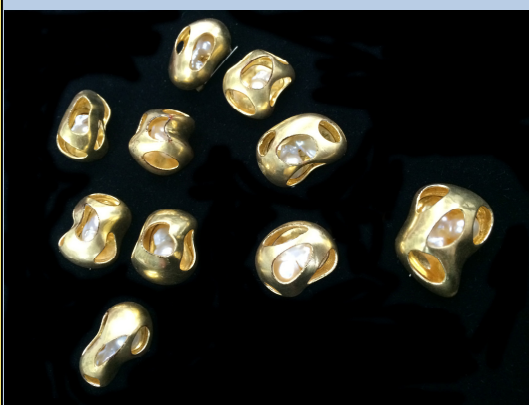
However all is not as it seems; the images used in the backdrop are actually photographs taken in Derbyshire's Creswell Crags, a system of caves, whose cave-art, some believe was created over 40,000 years ago. Through this series of intriguing objects and settings, Kirsty weaves together elements of a forgotten past and an imagined future.

This exhibition will be of interest to art, the science of space and the study of rock formation linked to geography subjects.



The Other Mountain

30 April to 9 July



Other Exhibitions at



The Other Mountain: Contemporary Chinese Jewellery

The Other Mountain presents stunning jewellery from contemporary jewellers. Exploring recent internationalisation of contemporary Chinese jewellery design, The Other Mountain demonstrates how an increase in academic travel over the past twenty years has affected these trends. Over the past twenty years an increasing number of Chinese students have had the opportunity to study in the West and many of them have returned home to China, developed their careers as artists, designers, and teachers, and are now influential in the education of succeeding generations of students.

This exhibition will be of interest to art, design and cultural subjects based on China.

Adele Howitt, Ceramic Landscape, 18 June to 3 September

Adele Howitt presents a new series of 7 large intricate, ceramic sculptures seemingly delicate, yet robust. In 2012 Adele was resident artist at Naturalia in Sevilla, Spain, where she developed an interest in pollen grains and developed a new understanding of the living landscape. At a similar time she also rediscovered her pottery skills and began pushing the medium to its technological limits. Combining this research with influences from the countryside and coast near her Humber home, Ceramic Landscape links nature, imagination and abstraction in landscape formations, designed to stimulate the viewer.

Ceramic Landscape is supported by public funding through Arts Council England,

20-21 Visual Arts Centre offers an excellent clay workshop that links to this exhibition. For more information please contact us. See details below.



There are a number of educational opportunities available with all our exhibitions, from self-guided tours to workshops created just for you on any topic. For more information, please get in touch.

Contact

Address: 20-21 Visual Arts Centre, Church Square, Scunthorpe, North Lincolnshire, DN15 6TB

Tel: 01724 297070

Email: education.2021@northlincs.gov.uk

Web: www.northlincs.gov.uk/20-21

Blog: www.educationat2021.blogspot.co.uk

Twitter: @2021VisualArts **Facebook:** Search for 20-21 Visual Arts **Instagram:** @2021VisualArts

